

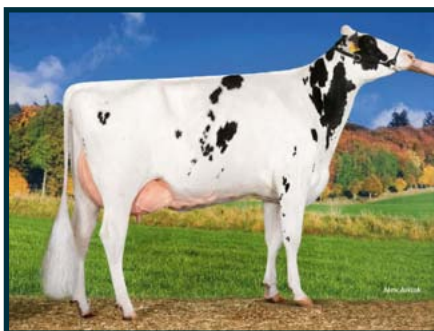


New perspectives in Holstein breeding

Photo: Peggy Schröder

## Comment on April proof run of GGI top daughter proven sires

After the April proof run, the top list is completely different. On the one hand, this is due to the influence of the annual base change and, on the other hand, to the multiplicity of high newcomers. In the Holstein top list, the special focus is on **Maserati**. He is not only the highest for RZG, but also high-class regarding conformation. **NOG Brosco**, from the J family of



Maserati daughter Laproma

Jürgen Hintze, is a high newcomer as well and is out of the family of **NOG Mato** and **Eminenz** as well as **Burundi**. **Lennard** increased his breeding value for conformation and confirmed his position in

the top list. Among the 80 newcomers in the Top-300, especially the **Xacobeo** sons **Xiras**, **Xeed**, **Xaroman** and **Norman** stand out. **Xiras** – like **Xeed**, being out of the full sister of **Guarini** – is the highest of them and **Xaroman** outperforms all regarding conformation. More newcomers worth looking at specifically are, amongst others, the components specialist **Le Midi**, the all-rounder **Kuwait**, the outcross bull **Burma** as well as the conformation sire **Amos**.

Despite the very clear changes in April, the well-known bulls are pleasingly stable and this with very high daughter numbers. With RZG 139 and a full 6 point lead, **Morris**

jumps to the top of the Red Holstein top list. Besides high milk yield and positive protein percentages, he is particularly characterized by the transmission for feet and legs. **Lasse P** becomes more and more a solid pillar of polled breeding and is the highest Lawn Boy son. **Malvoy** son **Malden** remains the highest bull for feet and legs in the top list.

**Madeira** is constant as well. **Dertour** is still the highest of all bulls for overall conformation and he stays strong for longevity and daughter fertility. The full brothers **Detroit** and **Dixieland** (s. **Destry**) can barely achieve their half brother's conformation, but score for production. **Deal P** is also new, and he crowns the strengths of his sire line-up through the polled gene. The Fiction RF sons **Findus** and **Falster** are mainly used for production transmission.

## Base shifts for production and relative breeding values April 2015

With the first evaluation run of the year, not only the annual update of the basis for all relative breeding values has been carried out, but also the base shift done every 5 years for milk production single breeding values. Many new bulls, especially **Man-O-Man** sons, enter the Holstein top list. Among the Red Holsteins, **Fidelity** has two new sons at the top.

As recommended by Interbull, the basis for milk production traits is updated every 5 years. The basis is now cows born in 2010 (previously born in 2005). With the breeding progress achieved over the past five years, the following changes in breeding

values have been made:

	M-kg	F-%	F-kg	P-%	P-kg
Holstein	-355	0.06	-8.9	0.01	-11.4
Red Holstein	-288	0.05	-8.2	0.00	-10.2

### Yearly update

As happens every year in April, there is also the shift of the basis for all relative breeding

values. All German A.I. bulls born 2005-2007 are the basis (previously 2004-2006) which means they have average relative breeding values of 100 within the breed. Changes (breeding value deductions) are given in the table at the end of this article.

If you want to learn more about breeding values, visit our homepage at [www.ggi.de](http://www.ggi.de)

	RZM	RZS	RZE	RZN	RZR	RZKm	RZG	Dairy type	Body	F&L	Udder	RZD	RZKd
Holstein	-1.4	-1.3	-1.6	-1.2	-0.5	-0.7	<b>-2.2</b>	-1.8	-0.9	-0.2	-1.4	0.3	0.2
Red Holstein	-0.5	-1.8	-1.2	-0.6	0.8	0.1	<b>-1.1</b>	-0.9	0.6	-1.1	-1.3	1.0	-0.4

**GERMAN HOLSTEINS NEWS** *light*



**Current proofs of GGI top daughter proven sires**



(April 2015)

**Holstein**

**Red Holstein**

Name	Herdbook No.	Interbull No.	Sire	Dam's Sire	Milk-kg	Fat-%	Fat-kg	Protein-%	Protein-kg	RZM	Rel. RZM in %	Daughters	Herds	Dairy type	Body	Feet & Legs	Udder	RZE	RZS	RZN	RZR	RZG	Calving ease	Brachyspina	Polled	aAa	Name
Maserati	637272	DEU 000664127354	Man-O-Man	Pronto	1332	-0.04	48	+0.01	46	128	95	202	72	111	117	134	124	136	117	121	117	148	112	BYF	243165	Maserati	
NOG Brosco	491135	DEU 000353538153	Bronco	Jefferson	2136	-0.24	57	±0.00	71	144	89	63	25	104	105	109	119	117	107	115	100	147	96	BYF	342516	NOG Brosco	
Lennard	822437	DEU 000353831144	Legend	Ramos	1042	+0.22	64	+0.12	48	132	90	88	53	114	102	117	102	111	117	122	117	145	105	BYF	153624	Lennard	
Mont Blanc	637271	DEU 000664079998	Man-O-Man	F B I	2018	-0.28	48	-0.06	61	137	88	92	55	119	124	123	100	120	110	111	108	142	103	BYF	432561	Mont Blanc	
Ironman	506511	CAN 000106372011	Man-O-Man	Shottle	1627	-0.30	31	+0.02	56	132	93	168	65	112	102	124	99	112	99	123	108	141	80	BYF	324165	Ironman	
Shirocco	804276	NLD 00086454331	Super	Goldwyn	1447	-0.29	26	-0.01	48	127	88	74	22	132	96	106	130	124	107	120	114	140	101	BYF	n.a.	Shirocco	
Dotch	822436	DEU 001503818433	Dotson	Elegant	1973	-0.18	58	-0.09	56	135	90	90	51	87	100	120	94	103	96	111	118	140	109	BYF	315246	Dotch	
Burundi	149941	DEU 000353931196	Bronco	Goldwyn	1616	-0.15	47	-0.02	52	132	83	34	28	99	101	114	115	115	109	113	107	139	118	BYF	n.a.	Burundi	
Maximum	678170	DEU 000769509874	Man-O-Man	Laudan	1090	-0.10	33	±0.00	37	121	95	303	220	105	71	112	101	97	112	131	124	139	126	BYF	234165	Maximum	
Enzo	675261	DEU 000534901479	Encino	O-Man	1857	-0.22	49	+0.01	64	139	95	123	106	90	99	108	78	88	113	116	107	138	112	n.a.	n.a.	Enzo	
Stalone	804210	DEU 001270523676	Stylist	Toystory	1798	-0.10	60	+0.09	71	145	96	196	42	105	73	98	90	85	110	114	89	138	120	n.a.	312546	Stalone	
NOG Mavali	491103	LUX 000198876645	Man-O-Man	Goldwyn	1212	+0.12	61	+0.05	46	131	96	260	99	112	91	115	112	113	95	115	100	138	107	BYF	324156	NOG Mavali	
Lets-Go	678168	NLD 000543462798	Legend	Shol Joc	957	-0.21	60	+0.34	67	144	92	170	133	98	115	102	92	100	111	104	100	137	100	BYF	n.a.	Lets-Go	
Giabo	677301	DEU 000536124807	Gibor	Shottle	1294	-0.18	32	+0.05	49	128	93	122	84	88	93	108	91	94	114	125	113	137	105	BYC	315426	Giabo	
NOG Macolo	491119	DEU 000354120415	Man-O-Man	Shottle	1499	-0.14	+44	-0.01	+49	130	87	87	35	116	101	115	92	104	112	121	109	137	115	BYF	135264	NOG Macolo	
Man Igloo	822418	CAN 000106546094	Man-O-Man	Goldwyn	1080	-0.08	+34	+0.10	+47	128	90	103	63	115	97	121	101	111	111	111	111	137	108	BYF	132645	Man Igloo	
Meido	568581	DEU 0001210032478	Man-O-Man	Goldwyn	894	+0.15	+51	+0.17	+47	131	95	250	132	87	98	110	106	105	97	116	111	136	107	BYF	423615	Meido	
Pelegrino	638593	DNK 003372304303	Planet	Laudan	1691	-0.16	+49	-0.05	+52	132	95	184	103	114	89	99	115	107	110	120	96	136	106	BYF	351426	Pelegrino	
Making	822446	FRA 008501200903	Man-O-Man	Oliver 2	1183	-0.07	+39	-0.01	+38	123	90	106	55	88	103	118	112	114	114	127	98	135	119	BYF	312456	Making	
Marcinos	678161	NLD 000534083054	Man-O-Man	Titanic	1072	+0.01	+44	+0.10	+47	129	90	107	76	94	114	120	103	114	107	114	103	135	108	BYF	216435	Marcinos	
Le Midi	677908	DEU 000536633316	Legend	Ramos	356	+0.52	+65	+0.15	+27	121	95	205	138	99	102	116	109	112	121	119	114	135	101	BYF	132564	Le Midi	
NOG Jeto	490920	DEU 000116481642	Jewel	Laudan	2221	-0.32	+50	-0.18	+54	133	97	269	113	111	78	133	100	109	97	107	98	134	104	BYF	651243	NOG Jeto	
Mabuse	841016	DEU 000663524008	Man-O-Man	Shottle	+1077	-0.10	+32	-0.06	+29	117	94	175	97	117	115	128	113	127	111	127	107	134	106	BYF	342156	Mabuse	
Xiras	811377	NLD 000899192223	Xacobeo	Goldwyn	+1823	-0.50	+16	-0.15	+45	123	92	159	77	111	93	122	119	121	96	114	111	134	119	BYF	423516	Xiras	
Plagiat	822420	DEU 001501013201	Planet	Shottle	+1601	-0.22	+39	-0.09	+44	126	91	88	57	108	105	112	105	111	112	123	97	134	106	BYF	534162	Plagiat	
Pinolo	822391	FRA 000141060248	Planet	O-Man	+1715	-0.15	+51	-0.04	+53	133	95	139	68	108	105	92	109	104	111	117	97	133	106	BYF	342156	Pinolo	
Jugador	811214	ITA 01990478137	Jardin	Finley	+1934	-0.38	+33	+0.09	+75	143	93	84	58	100	118	105	102	108	93	95	96	133	83	BYF	126345	Jugador	
Pazzini	822384	NLD 000525966931	Planet	Goldwyn	+891	+0.08	+44	+0.09	+39	124	96	188	82	109	90	106	105	104	117	114	115	133	103	BYF	135264	Pazzini	
Lexos	841017	FRA 002215667076	Legend	Buckeye	+947	-0.04	+34	+0.04	+36	121	92	151	99	88	106	120	115	118	115	114	108	132	105	BYF	n.a.	Lexos	
Easynet	840991	DEU 000352878649	Eleve	Lou	+1680	-0.43	+19	-0.10	+45	124	95	128	64	118	94	103	121	114	114	110	113	132	110	BYF	342165	Easynet	
Pernod	148598	FRA 002141060249	Planet	O-Man	+1279	-0.03	+47	-0.06	+37	123	90	69	54	90	98	109	107	106	110	120	107	132	111	BYF	n.a.	Pernod	
Sacramento	637086	DNK 004564082808	Socrates	Shottle	+972	+0.17	+56	-0.06	+26	118	89	83	49	102	108	104	119	115	126	124	104	132	92	BYF	n.a.	Sacramento	
Monitor	149907	NLD 000543778792	Man-O-Man	Bolton	+786	+0.13	+44	+0.14	+41	126	98	800	407	115	114	103	111	114	101	117	111	132	107	BYC	423165	Monitor	
Gismo	677194	DEU 000535854166	Gibor	Shottle	+729	-0.01	+28	+0.07	+31	118	95	145	101	79	92	119	98	101	129	121	112	132	95	BYF	231465	Gismo	
Jello	677907	DEU 000536423903	Jeeves	Goldwyn	+318	+0.21	+33	+0.04	+15	109	95	234	178	94	108	127	122	127	117	126	116	132	99	BYC	132654	Jello	
Plexon	841024	DEU 001062627458	Planet	Goldwyn	+1343	-0.22	+30	-0.13	+31	117	91	104	56	120	86	108	115	111	100	124	121	132	122	BYF	231456	Plexon	
Omagic	674301	DEU 000580388142	O-Man	Lambada	+1345	+0.05	+58	-0.03	+42	128	95	120	80	74	85	112	83	87	103	114	119	132	114	n.a.	n.a.	Omagic	
Norman	149936	DNK 004109204178	Xacobeo	Goldwyn	+640	+0.09	+34	+0.22	+43	126	84	45	34	110	90	119	121	119	115	104	100	132	112	BYF	n.a.	Norman	
Manex	822453	DEU 001501013217	Man-O-Man	Baxter 2	+1039	-0.09	+32	-0.05	+30	117	86	87	52	102	100	103	117	111	111	125	114	132	99	BYF	345216	Manex	
Juwentus	840928	DEU 000663196060	Jewel	Manager ET	+1770	-0.30	+37	-0.13	+45	126	96	134	60	76	88	110	95	94	114	113	111	132	105	BYF	n.a.	Juwentus	
Jerado	811320	NLD 000545851587	Jeeves	O-Man	+643	-0.06	+20	-0.01	+20	110	95	143	54	71	95	122	111	110	108	128	124	131	107	BYF	312456	Jerado	
Playa	677510	NLD 000530632922	Planet	O-Man	+639	+0.15	+40	+0.14	+36	122	95	173	128	99	102	109	105	107	104	120	110	131	103	BYF	312456	Playa	
Elburn	638446	NLD 000359507595	Mr.Burns	O-Man	+1463	-0.33	+22	+0.05	+55	130	99	700	347	100	116	115	106	115	98	104	105	131	91	BYF	312456	Elburn	
Bordun	804258	DEU 001304043529	Bolton	O-Man	+636	+0.21	+46	+0.08	+30	120	98	741	184	107	85	122	117	116	120	114	101	131	91	BYC	423516	Bordun	
Blue Bay	637089	DEU 000663622761	Bogart	Goldwyn	+701	+0.20	+48	+0.08	+31	121	97	386	146	106	102	115	109	113	102	113	116	131	111	BYC	342156	Blue Bay	
Morris	917362	BEL 000210476234	Fidelity	Spencer 2	+1168	-0.02	+46	+0.21	+59	135	88	72	60	109	102	127	99	113	110	112	101	139	101	BYF	432516	Morris	
Lasse P	923156	DEU 000662992189	Lawn Boy	Classic PS	+826	+0.11	+44	+0.13	+40	124	97	326	162	99	92	117	104	107	111	118	105	132	109	BYF	423651	Lasse P	
Malden	917298	DEU 000535782066	Malvoy	Mascol ET	+1248	-0.25	+28	+0.01	+43	122	95	158	98	102	88	135	106	115	111	110	103	132	111	BYF	351426	Malden	
Maico	917288	DEU 000535766947	Malvoy	Ramos	+1453	-0.19	+42	-0.11	+39	121	95	213	154	91	102	114	93	101	96	125	114	130	104	BYF	534162	Maico	
Madeira	917194	DEU 000535256622	Malvoy	September	+1641	-0.36	+33	-0.08	+48	126	93	107	91	106	116	122	102	117	97	110	107	130	102	BYF	n.a.	Madeira	
Cold Boy	917227	BEL 000143329448	Spencer 2	O-Man	+653	+0.03	+30	+0.21	+41	123	94	105	80	93	97	112	84	94	118	114	118	130	117	BYF	n.a.	Cold Boy	
Dertour	599474	NLD 000535216372																									



## Maserati 637272

(Man-O-Man x Pronto x Morty x Mtoto)

CVF BLF BYF  
aAa 243165

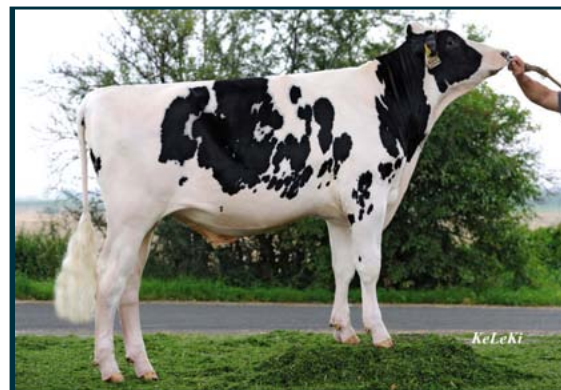


Scan QR code for detailed online breeding values

The new No.1 of the daughter proven Holstein sires, Maserati, gets his first daughter proven breeding value and completely confirmed his genomic figures and, partly, even improved them. The Man-O-Man son out of Conchita EX 90 (s. Pronto) is out of a deep cow family strong for conformation that combines famous names of Holstein breeding in his back pedigree, VG 87 Morty x VG 88 Mtoto x VG 89 Mandel x VG 86 Aerostar x EX 91 Enhancer x EX 91 Chief Mark. Maserati especially convinces with his consistently high breeding values for the functional traits in combination with excellent figures for feet & legs and udder as well as overall conformation. Having good milk yield and components, he can be called a true all-rounder.

At the show "Hessens Zukunft 2015", a progeny group of Maserati was presented and already clearly embodied the mentioned characteristics.

Having all these really positive traits it is more than pleasing that Maserati also offers a positive breeding value for calving ease and, therefore, can be freely used on heifers.



	88	100	112	124
Dairy Character (Index)				111
Body (Index)				117
Feet and legs (Index)				134
Udder (Index)				124
RZE (Index)				136

Proofs 2015/04



## Shirocco 804276

(Super x Goldwyn x Rc. Marshal ET x Lord Lily)

CVF BLF BYF  
aAa -



Scan QR code for detailed online breeding values

We would like to introduce a new daughter proven sire in the Top-10: Shirocco. The Super son ranks at No.6 and descends from the most famous Dutch cow family, the Ritas. This special cow family unifies both production and longevity as well as very good conformation via the sire line-up VG 88 Goldwyn x VG 88 Boliver x VG 85 Ricecrest Marshall x EX 92 Lord Lily. These characteristics are clearly reflected in Shirocco's transmission profile.

The Super son shows positive figures clearly above average for all breeding values and scores with good conformation and clearly above average milk production as well. It is pleasing that he combines these qualities with strengths for the functional traits.

At the show "Rind aktuell" in Karow, Mecklenburg-West Pomerania, a progeny group of Shirocco was presented recently and the stylish, harmonic animals excelled with good locomotion on outstanding feet and legs as well as highly and firmly attached udders. The icing on the cake of Shirocco's transmission profile is definitely the high RZRobot that recommends him for mating in farms having automatic milking systems.



	88	100	112	124
Dairy Character (Index)				132
Body (Index)				96
Feet and legs (Index)				106
Udder (Index)				130
RZE (Index)				124

Proofs 2015/04



## Dixieland 923422

(Destry x Shottle x Lentini RF x Tulip)

CVF BLF BYF  
aAa 231456



Scan QR code for detailed online breeding values

Like Maserati and Shirocco, Dixieland also got his first daughter proven breeding value in April. The Destry son out of the bull dam Apina Massia 102 EX 90, popular worldwide, descends from the famous European Apina Massia dynasty. This deep Dutch cow family has already produced lots of successful progeny for shows and breeding. The deeply anchored qualities of this cow family, high components in combination with production and solid conformation are crowned by a little bit of conformation in Dixieland's pedigree.

This already could be seen in the Dixieland progeny group at the show "Hessens Zukunft 2015". The animals presented themselves tall and elegant with well-sloped rumps. The clean feet and legs enabled harmonic locomotion and udders were attached firmly and highly, showing good texture.

Having that much conformation power, we should appreciate that the functional traits are completely positive.



	88	100	112	124
Dairy Character (Index)				129
Body (Index)				104
Feet and legs (Index)				109
Udder (Index)				128
RZE (Index)				126

Proofs 2015/04

# April proof run of GGI top G-Genomic sires



As always, we had lots of newcomers in the genomic top list in April. However, it is getting harder for the individual breeder to keep track. If you could limit your selection to the Top-50 one year ago to find the best for your herd, today you have to worry you will miss important sires when focusing on just the Top-100.

The list of the Holstein G-Genomic bulls is still dominated by **Cinema** with more than +3,000 kg milk, despite the base shift. He is followed by his half brother,



**Cinema** (s. Chevrolet)

**Baltikum**, who is, therefore, the highest newcomer. They are joined by more top-class bulls from the Heaven family: **Chevalier** and **Beat**. This "family group" is completed by **Malta**.

Interesting sires of sons have established themselves: Anton, with **Adventure** and **Anamur** as well as **Big Point**, with **Bronx** and **Bacalao**. Bube also proved his potential with his early son **Bushman**. Boss, another bull from Germany, clearly emerges as a respectable sire of sons with **Bolaro**, **Bombastic** and **Blossom**.

Despite the many newcomers and the relatively high base shift, "old friends" such as **Background**, **Banesto**, **Lesson**, **Lobach** or **Sinus** are still a good choice to improve your herd. **Epos** remains unchanged, the highest conformation sire on offer in the face of the swift breeding progress.

**Sunday P**, **Limelight P**, **Ohio P** and **Eagle P**

should also be mentioned and they – together with **Blue P RDC**, **Castino P** as well as **Dover P RDC** – enhance polled breeding. This is also true for **Apoll P**, our No.1 in the top list of genomic Red Holsteins. As well

as excellent production transmission, this top sire, in high demand internationally as a sire of sons, shows no weaknesses and sets new standards worldwide. The sons of Perfect Aiko present themselves very



**Apoll P** (s. Aikman)

well. They dominate the Top-10 with **Payback**, **Red Power**, **Perfection** and **Present**; the very complete Payball ranks slightly lower. There is also a high polled son of Perfect Aiko: **Pelican P**. On this subject, **Kajak P**,

**Kansas P**, **Knut P** and **Redtop P** should be mentioned as other polled alternatives. At the same time, the latter is currently the best longevity sire among the Red Holsteins and offers a very interesting blood line and a complete transmission profile. **Krespo PP** also offers this characteristic and all of his progeny are genetical-

ly polled.

Fageno stands out as a sire of sons with a sensational bang – his first sons **Fireman** and **Defago-Red** enter with super figures.

The many high red carriers in GGI's portfolio offer additional choices for Red Holstein and Holstein breeders alike. It is possible to find the who's-who of Holstein breeding in the Red Holstein population with bulls like **Bagno RDC**, **Nugget RDC**, **Season RDC** and many more and spread the different colour without compromising, in the Holstein population so that there will be new possibilities for all breeders.

Moreover, we are proud of the fact that we can also offer sexed semen of our usual high quality for a wide variety of top sires, daughter proven and genomic, like

**Maserati** and **Cinema**.

You should visit the GGI website frequently under [www.ggi.de](http://www.ggi.de) to track what is on offer, which is constantly updated.

The quality of the German genomic breeding value estimation really shows when looking at how well our

bulls perform with national breeding values among the EuroGenomics partners and, especially, the high gTPI figures that should convince the final doubters and further increase the attraction of German genetics in the future.



## Kansas P 917538

(Kanu P x Fidelity x Zabing RDC x Gibor)

CVF BLF BYF  
aAa 651423



Scan QR code for detailed online breeding values

Kansas P is a promising newcomer of the April proof run. He attracts attention and shows that polled and milk production can be combined. The Kanu P son out of a Fidelity x Zabing RDC x Gibor is one of the highest milk sires among the polled bulls. However, he does not only shine with milk production. Having excellent feet & legs and very good udders, Kansas P transmits positively for teat length which is in very high demand for Red Holstein breeding at present. Kansas P is also positive for the fitness traits like udder health, daughter fertility and longevity. Moreover, good milkability in combination with the suitability for use on heifers have to be mentioned. So Kansas P can be considered an all-round talent and can be recommended for farms that do not want to compromise.



	88	100	112	124
Dairy Character (Index)				99
Body (Index)				98
Feet and legs (Index)				136
Udder (Index)				119
gRZE (Index)				126

Proofs 2015/04

All GGI bulls immediately available with the GGI App!



# Current proofs of GGI top G-Genomic sires

(April 2015)



Holstein

Name	Herdbook No.	Interbull No.	Sire	Dam's Sire	Milk-kg	Fat-%	Fat-kg	Protein-%	Protein-kg	gRZM	Rel. gRZM in %	Dairy type	Body	Feet & Legs	Udder	gRZE	gRZS	gRZN	gRZR	gRZG	Calving ease	Brachyspina	Polled	aAa	Name
Cinema	151578	DNK 003372306258	Chevrolet	Snowman	+3048	-0.12	105	-0.08	92	162	71	108	109	122	110	120	112	123	98	167	108	BYF	435216	Cinema	
Baltikum	619105	DNK 003372306362	Balisto	Snowman	+1994	+0.11	91	-0.07	75	151	71	121	124	125	118	132	125	124	96	161	110	BYF	234165	Baltikum	
Chevalier	619100	DNK 003372306253	Chevrolet	Snowman	+2066	-0.03	78	-0.04	64	143	71	105	112	121	114	122	117	132	114	160	110	BYF	423651	Chevalier	
Beat	571873	DNK 003372306314	Boss	Snowman	+1573	-0.03	59	+0.16	71	145	71	117	125	128	118	133	123	122	111	159	102	BYF	n.a.	Beat	
Bolaro	811516	DEU 000121142902	Boss	Beacon	+1998	-0.23	53	±0.00	68	142	71	114	119	130	123	135	103	127	115	157	107	BYF	342516	Bolaro	
Mandela	823081	NLD 000916344441	Mogul	Super	+1416	+0.16	73	+0.14	63	142	73	106	107	115	109	115	115	130	116	157	107	BYF	153624	Mandela	
Background	619088	DEU 000666268036	Beauty	Freddie	+1703	+0.02	70	-0.03	54	136	71	103	112	115	124	125	129	131	117	157	104	BYF	321465	Background	
Malta	151576	DNK 003372306218	Model	Snowman	+1824	+0.10	84	-0.01	60	142	71	110	117	126	119	129	103	131	110	156	101	BYF	423561	Malta	
Marigo	619098	DNK 002371402611	Model	Freddie	+1436	+0.08	65	+0.01	49	133	71	95	114	115	120	122	112	137	122	155	107	BYF	342516	Marigo	
Superior	680959	NLD 000763606749	Supersire	Snowman	+1965	+0.03	61	+0.03	69	146	72	111	99	121	108	116	107	129	97	155	111	BYF	324156	Superior	
Totilas	811508	USA 003010354171	Toprock	Epic	+1176	-0.01	45	+0.08	48	130	71	114	100	125	128	130	109	136	124	154	113	BYF	324156	Totilas	
Skagen	619099	DEU 000666422455	Shotglass	Beacon	+2090	-0.09	72	-0.04	66	143	71	107	101	113	111	113	119	127	106	154	116	BYF	324156	Skagen	
Famasio	571884	DEU 000121218239	Fanatic	Snowman	+1754	-0.12	56	+0.01	60	138	71	92	113	118	125	126	130	126	105	154	104	BYF	432516	Famasio	
Mocon	823099	DEU 000356687510	Morgan	Snowman	+1822	-0.05	67	+0.04	66	143	71	95	98	112	120	115	122	123	105	154	106	BYF	423615	Mocon	
Nugget RDC	680244	GBR 388380300287	Numero Uno	Destry	+422	0.55	+71	+0.17	+31	124	73	107	100	127	129	130	122	138	129	154	101	BYF	432516	Nugget RDC	
Blossom	681116	DEU 000538251988	Boss	Snowman	+848	±0.00	+34	+0.15	+44	126	71	98	114	136	130	138	139	131	116	154	104	BYF	243615	Blossom	
Fergus	804338	DEU 000356650078	Fanatic	Snowman	+2274	-0.16	+72	-0.08	+68	144	71	114	109	122	116	124	112	123	103	154	107	BYF	342516	Fergus	
Peak RDC	681119	NLD 000878890851	Perfect Aiko	Hunter	+1279	+0.06	+57	+0.08	+52	134	71	111	110	125	127	132	111	134	109	153	109	BYF	324156	Peak RDC	
Borussia	619018	DEU 001602887847	Butch	Ramos	+1063	+0.30	+73	+0.27	+64	144	80	92	93	114	105	105	117	118	115	152	117	BYC	345216	Borussia	
Bugatti	823124	DEU 000538441328	Balisto	Shamrock	+1127	+0.25	+70	+0.14	+53	136	71	96	114	122	113	121	119	129	111	152	118	BYF	n.a.	Bugatti	
Corelli	811514	DEU 000356687510	Chevrolet	Bookem	+2240	-0.11	+76	-0.07	+67	144	71	107	112	118	115	121	107	122	101	152	100	BYF	324165	Corelli	
Mr Max	811488	USA 000071588582	Mogul	Super	+1784	-0.25	+43	-0.09	+50	129	73	102	103	130	132	134	122	136	102	152	112	BYF	531426	Mr Max	
Gasometer	680760	DEU 000538155646	Galaxy	Shamrock	+1294	-0.06	+45	+0.08	+52	132	72	98	109	119	116	120	109	134	120	151	108	BYF	132546	Gasometer	
Knobby	507517	USA 000072436797	Cashcoin	Man-O-Man	+1010	+0.17	+57	+0.17	+51	134	71	104	116	120	120	126	125	127	112	151	116	BYF	561	Knobby	
Sunglass	680956	DEU 000538246079	Shotglass	Freddie	+1391	+0.29	+86	+0.06	+53	138	71	101	105	109	110	111	128	123	114	151	105	BYF	342516	Sunglass	
Garvin	811477	DNK 003001001793	G-Force	Super	+1299	-0.16	+34	+0.09	+53	131	73	101	98	118	116	117	128	131	115	151	107	BYF	315264	Garvin	
Lesson	680950	NLD 000919137871	Let It Snow	Bookem	+1422	-0.09	+46	-0.01	+47	129	71	114	105	127	136	137	120	132	107	151	103	BYF	342516	Lesson	
Aden	823115	DEU 000121365583	Aikman	Shamrock	+1112	+0.32	+78	+0.06	+44	132	71	99	102	121	126	125	109	133	111	151	115	BYF	n.a.	Aden	
Lexington	619078	DNK 003372305844	Lexor	Time	+798	+0.25	+57	+0.19	+47	131	73	111	101	125	120	125	112	128	119	150	121	BYF	321456	Lexington	
Season RDC	680955	DEU 000354494759	Shotglass	Axion-Red	+1604	-0.04	+59	+0.01	+55	136	71	106	94	130	119	124	120	123	104	150	114	BYF	423156	Season RDC	
Canyon RDC	680954	DEU 000666050471	Cashcoin	Snowman	+787	+0.19	+50	+0.09	+36	124	71	103	95	131	117	123	137	138	110	150	114	BYF	315246	Canyon RDC	
Mercury	619076	DEU 000666188940	Mogul	Domain	+1193	+0.12	+60	-0.01	+39	126	73	108	101	118	136	131	130	135	107	150	113	BYF	243561	Mercury	
Kayne	811498	GBR 952180626236	Mogul	Domain	+1423	+0.13	+70	+0.01	+49	133	73	110	110	128	134	137	111	127	102	150	112	BYF	324156	Kayne	
Big Point	619043	DEU 000666050471	Bookem	Man-O-Man	+1356	-0.15	+38	+0.08	+54	132	73	110	114	120	124	128	118	131	106	149	112	BYF	315246	Big Point	
Pandoro	571868	DEU 000121142822	Pilot MR	Bookem	+555	+0.33	+54	+0.31	+49	133	71	116	119	116	105	118	103	127	129	149	117	BYF	342156	Pandoro	
Maxime	680238	DNK 003372306051	Maximum	Time	+810	-0.08	+24	+0.08	+36	120	73	100	89	119	118	116	130	136	134	149	121	BYF	531462	Maxime	
Leno	811484	DNK 003372304890	Lexor	Time	+688	+0.37	+64	+0.19	+42	130	73	104	101	127	118	123	120	124	120	149	126	BYF	231465	Leno	
Showdown	823100	DEU 001501403906	Shaw	Bogart	+1333	-0.11	+41	+0.07	+53	132	71	92	120	115	120	123	113	130	113	149	99	BYF	531462	Showdown	
Maibach	571861	DEU 000356430467	Meridian	Snowman	+2042	-0.18	+60	-0.05	+62	139	73	114	114	112	125	126	123	119	98	149	106	BYF	432156	Maibach	
Bronx	823116	DEU 001304685072	Big Point	Leko	+1322	-0.07	+45	+0.05	+49	130	71	112	114	137	118	133	109	131	104	149	112	BYF	423651	Bronx	
Gandhi	151577	NLD 000639499642	Galaxy	Beacon	+605	+0.50	+74	+0.15	+36	127	73	105	108	108	127	123	129	124	149	108	BYF	n.a.	Gandhi		
Faun	804344	DEU 000356552537	Fanatic	Mascol ET	+1046	+0.04	+46	+0.06	+42	126	71	91	94	130	124	124	123	114	112	149	111	BYF	543612	Faun	
Go Now RF	679573	NLD 000709809726	G-Force	Ralstorm	+1375	+0.10	+65	+0.15	+62	141	73	117	111	126	110	123	122	114	102	148	113	BYF	234156	Go Now RF	
Sinus	804335	DEU 000666268032	Snowmaster	Freddie	+1621	+0.00	+65	-0.04	+50	133	71	95	108	121	118	122	109	126	114	148	106	BYF	423651	Sinus	
Bacalao	811513	DEU 000356815104	Big Point	Beacon	+1340	-0.22	+29	+0.06	+52	130	71	108	115	125	126	132	119	130	106	148	105	BYF	324165	Bacalao	

Red Holstein

Apoll P	924726	NLD 000762042012	Aikman	Lawn Boy	+2733	-0.33	+77	-0.07	+85	153	71	123	111	114	123	127	122	131	97	164	108	BYF	Pp <sup>2</sup>	243615	Apoll P
Fireman	588672	DEU 0000121389344	Fageno	Snowman	+2249	+0.02	+96	-0.06	+70	147	71	106	117	121	117	125	123	124	100	157	110	BYF		432561	Fireman
Effort	917530	NLD 000946768563	Ellmau	Snowman	+1820	-0.23	+52	-0.04	+58	134	71	97	111	130	129	133	125	130	103	153	93	BYF		234156	Effort
Red Power	924723	DEU 000666354866	Perfect Aiko	Fidji	+708	+0.68	+90	+0.26	+48	135	71	99	105	120	126	126	114	128	118	153	119	BYF		432516	Red Power
Perfection	917574	DEU 000538270556	Perfect Aiko	Selayo	+1065	+0.50	+90	+0.16	+52	137	71	97	110	122	131	131	114	124	111	153	110	BYF		423651	Perfection
Mr. Marco	924717	DEU 000666321958	Magenta	Niagra	+2234	-0.17	+75	-0.17	+59	137	71	115	115	104	130	126	125	123	106	150	109	BYF		342156	Mr. Marco
Dalman	917525	DEU 000537553288	Dakker	Jerudo	+1304	+0.04	+58	+0.10	+54	133	73	105	106	120	106	115	115	123	128	150	107	BYF		264153	Dalman
Kansas P	917538	DEU 000537926563	Kanu P	Fidelity	+2014	-0.41	+42	-0.13	+56	131	71	99	98	136	119	126	117	128	103	148	108	BYF	Pp <sup>2</sup>	651423	Kansas P
Payball	924725	DNK 002371402620	Perfect Aiko	Snowman	+1553	-0.02	+62	-0.09	+45	127	71	102	118	135	136	143	101	130	110	148	110	BYF		342156	Payball
Eragon	588047	NLD 000765039529	El																						

**Sirius 151568**  
(Shan x Robust x Ramos x Shottle)

CVF BLF BYF  
aAa 432561

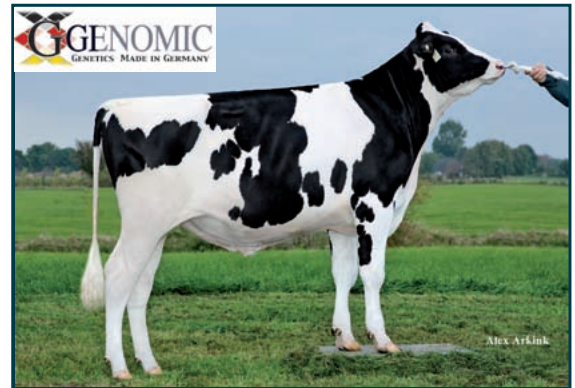
We would like to introduce a bull – Sirius, a Shan son out of the famous Larcrest Cosmopolitan family – who may not cause a furor because of top rankings or extremes in top lists, but who presents himself as very complete and solid sire. Having a strong cow family in the background Sirius shines as all-rounder. He combines good milk yield with high components and good, solid conformation. Sirius offers special strengths within conformation like feet & legs and udder where he has figures far above average.



Scan QR code for detailed online breeding values

Besides solid values for production and conformation, the Shan son scores with great figures for functional traits. Having very high longevity and impressive values for udder health and daughter fertility, he makes every dairy farmer's heart beat faster. More advantages are the suitability for heifers and top milkability.

Offering all these qualities, he should definitely accommodate the term "all-rounder".



	88	100	112	124
Dairy Character (Index)				107
Body (Index)				119
Feet and legs (Index)				120
Udder (Index)				126
gRZE (Index)				131

Proofs 2015/04

**Castino P 811493**  
(Cashcoin x Shottbolt x Goldwyn x September)

CVF BLF BYF  
aAa 432156

We present a very interesting polled sire out of a North American cow family: Castino P. The Cashcoin son with the sire line-up Shottbolt x Goldwyn x September does not have Lawn Boy in his pedigree and, therefore, offers an alternative for polled breeding. His dam, Venture Shottbolt Sizzle P, led the US top list of polled animals for a long time and Castino's half sisters belong to the current list leaders. His transmission profile is faultless and offers very good conformation breeding values with special strengths for feet & legs and udder. Having clearly above average milkability as well as excellent udder health and longevity, he impresses for the functional traits as well.



Scan QR code for detailed online breeding values

So Castino P is an outcross for polled and can be used on heifers.



	88	100	112	124
Dairy Character (Index)				121
Body (Index)				99
Feet and legs (Index)				121
Udder (Index)				128
gRZE (Index)				129

Proofs 2015/04

**Edelmut 917535**  
(Ellmau x Sterngold x Zenson x Talent 2 RDC)

CVF BLF BYF  
aAa 324156

Edelmut, a son of German sires, enters the stage. The Red Ellmau son descends from a VG 86 Sterngold x Zenson. His transmission profile combines breeding values at a very high level which is very rare. He shows good figures for milk production with positive protein transmission combined with conformation transmission, offering unequaled opportunities. Having clear strengths for feet & legs and udder, the linear is faultless. Edelmut transmits positively for teat length and rump slope.



Scan QR code for detailed online breeding values

The breeding value profile of this Ellmau son is completed by his figures for the functional traits. With far above average longevity and udder health, the very good daughter fertility is an eye-catcher. Due to all these characteristics, Edelmut can be considered a complete sire. So it is not surprising that he also has a high RZRobot that allows using him excellently for matings on robot farms.



	88	100	112	124
Dairy Character (Index)				103
Body (Index)				104
Feet and legs (Index)				125
Udder (Index)				132
gRZE (Index)				132

Proofs 2015/04